

Learn more & give at CovChurch.org/cwrdr

CWRD UPDATE

FALL 2023

Creating Pathway to Health Care in Nepal



Families access health care center in Nepal on new path

Working with families of the Gorkha District in rural Nepal, Shanti Nepal helps organize and provide quality health care services, education, and supplies for the most disadvantaged in the community. More than 3,700 women, children, and families have received basic health care support.

In addition, Shanti Nepal seeks to reach people with disabilities and others marginalized by the caste system.

One issue facing the medical center was that patients needed to navigate a muddy hill to receive necessary medical attention. Mr. Jas Bahadur Aale Magar, a retired veteran from India, had developed skills in engineering in the army. He committed to constructing a stone walkway, making the Satdobate Health Center safe and accessible. Health centers like this are the only places where basic needs such as prenatal care and medication can be addressed. Completing the pathway

enhances the powerful impact this center has on this community.

Shanti Nepal also empowers community transformation through advocacy. The reorganized community-based advisory boards have worked closely with families and city government to provide medicine and education, specifically working to educate and provide safe drinking water and basic hygiene for the community. **Surveys of stakeholders conducted by the advisory board have indicated only 6% of the respondents have a clean and sanitary toilet in their homes. Safe drinking water is also a major concern as only 24% of homes have access to the city water supply, with less than 1% indicating they have a consistent location for hand washing.** Through Shanti Nepal's advocacy, municipal officials, and the advisory boards, family and group education has shown a sustained change for the Gorkha District and the surrounding communities.

Learn more & give at CovChurch.org/cwrdr

CWRD UPDATE

FALL 2023

Creating Pathway to Health Care in Nepal



Families access health care center in Nepal on new path

Working with families of the Gorkha District in rural Nepal, Shanti Nepal helps organize and provide quality health care services, education, and supplies for the most disadvantaged in the community. More than 3,700 women, children, and families have received basic health care support.

In addition, Shanti Nepal seeks to reach people with disabilities and others marginalized by the caste system.

One issue facing the medical center was that patients needed to navigate a muddy hill to receive necessary medical attention. Mr. Jas Bahadur Aale Magar, a retired veteran from India, had developed skills in engineering in the army. He committed to constructing a stone walkway, making the Satdobate Health Center safe and accessible. Health centers like this are the only places where basic needs such as prenatal care and medication can be addressed. Completing the pathway

enhances the powerful impact this center has on this community.

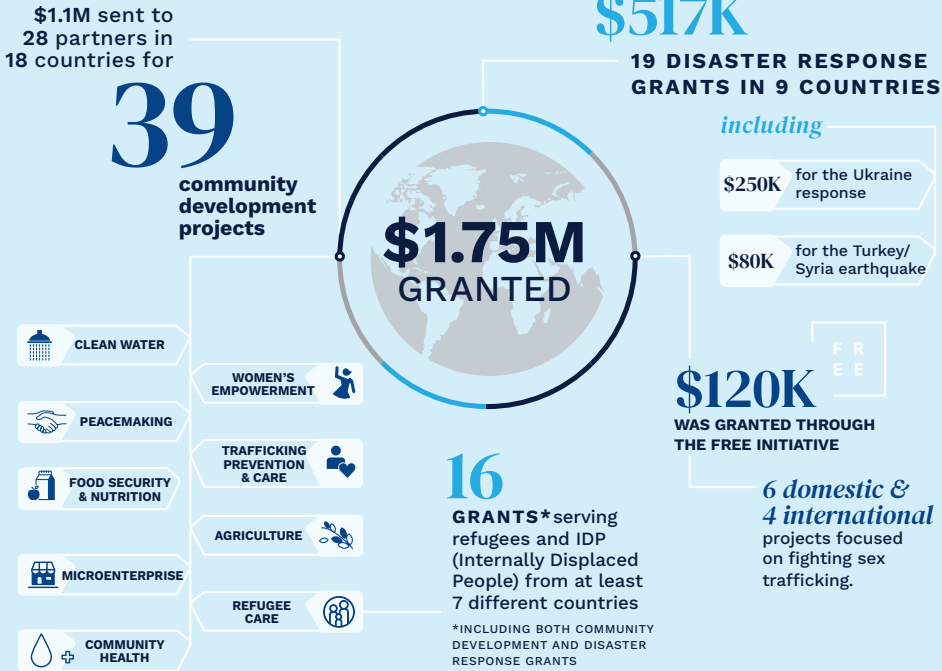
Shanti Nepal also empowers community transformation through advocacy. The reorganized community-based advisory boards have worked closely with families and city government to provide medicine and education, specifically working to educate and provide safe drinking water and basic hygiene for the community. **Surveys of stakeholders conducted by the advisory board have indicated only 6% of the respondents have a clean and sanitary toilet in their homes. Safe drinking water is also a major concern as only 24% of homes have access to the city water supply, with less than 1% indicating they have a consistent location for hand washing.** Through Shanti Nepal's advocacy, municipal officials, and the advisory boards, family and group education has shown a sustained change for the Gorkha District and the surrounding communities.

CWRD Year in Review

JULY 2022-JUNE 2023

Thank you for your generous support and partnership with Covenant World Relief & Development.

Here is a glimpse of your support of CWRD this year!

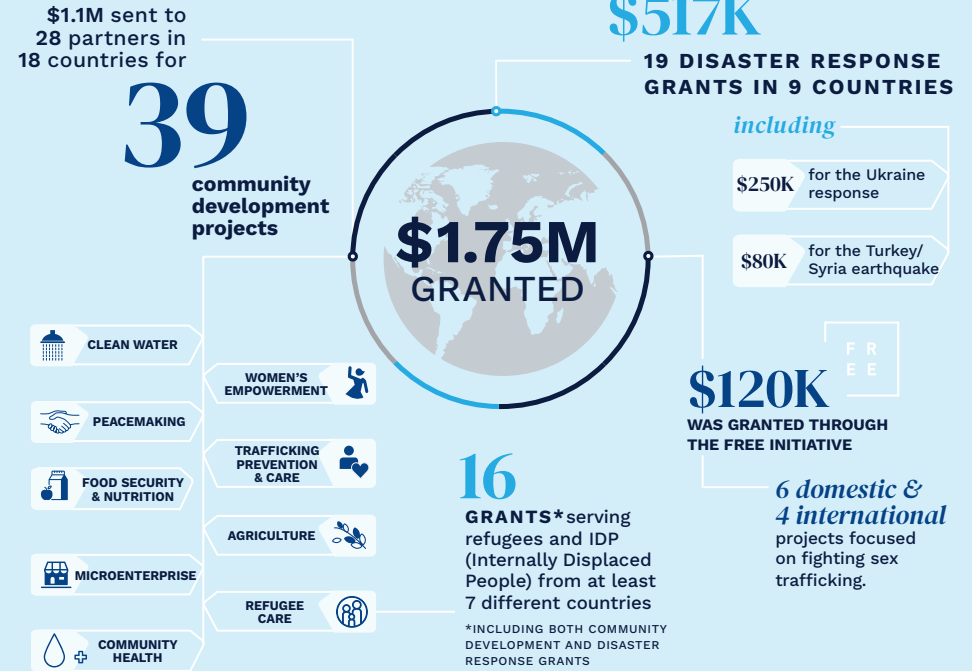


CWRD Year in Review

JULY 2022-JUNE 2023

Thank you for your generous support and partnership with Covenant World Relief & Development.

Here is a glimpse of your support of CWRD this year!



\$666,793 RAISED FOR WASH (WATER, SANITATION & HYGIENE) INITIATIVES

Covenant Kids Congo raised funds from **29 churches** and **328 individuals** for WASH initiatives in the DR Congo through Team World Vision.

\$1 MILLION+ CWRD SURPASSED OUR \$1M MILESTONE GOAL OF DONATIONS FOR UKRAINE

From 2021 until now, CWRD has raised a total of **\$1.04M** and counting in designated funds for Ukraine from **140 churches** and **1230 individuals**.

100% of every gift to CWRD goes to ministry. 90% of every gift goes directly to ministry programs. God has blessed us with increased partnerships and projects. We depend fully on you to continue this ministry. If you would like to learn more about giving to CWRD, please go to giving.covchurch.org/cwrld.

\$666,793 RAISED FOR WASH (WATER, SANITATION & HYGIENE) INITIATIVES

Covenant Kids Congo raised funds from **29 churches** and **328 individuals** for WASH initiatives in the DR Congo through Team World Vision.

\$1 MILLION+ CWRD SURPASSED OUR \$1M MILESTONE GOAL OF DONATIONS FOR UKRAINE

From 2021 until now, CWRD has raised a total of **\$1.04M** and counting in designated funds for Ukraine from **140 churches** and **1230 individuals**.

100% of every gift to CWRD goes to ministry. 90% of every gift goes directly to ministry programs. God has blessed us with increased partnerships and projects. We depend fully on you to continue this ministry. If you would like to learn more about giving to CWRD, please go to giving.covchurch.org/cwrld.



100% of every gift to CWRD goes to ministry. 90% of every gift goes directly to ministry programs. Learn more and give at CovChurch.org/cwrld

[@covenantworldreliefanddevelopment](https://www.facebook.com/covenantworldreliefanddevelopment) [@covworldreliefanddevelopment](https://www.instagram.com/covworldreliefanddevelopment)



100% of every gift to CWRD goes to ministry. 90% of every gift goes directly to ministry programs. Learn more and give at CovChurch.org/cwrld

[@covenantworldreliefanddevelopment](https://www.facebook.com/covenantworldreliefanddevelopment) [@covworldreliefanddevelopment](https://www.instagram.com/covworldreliefanddevelopment)

